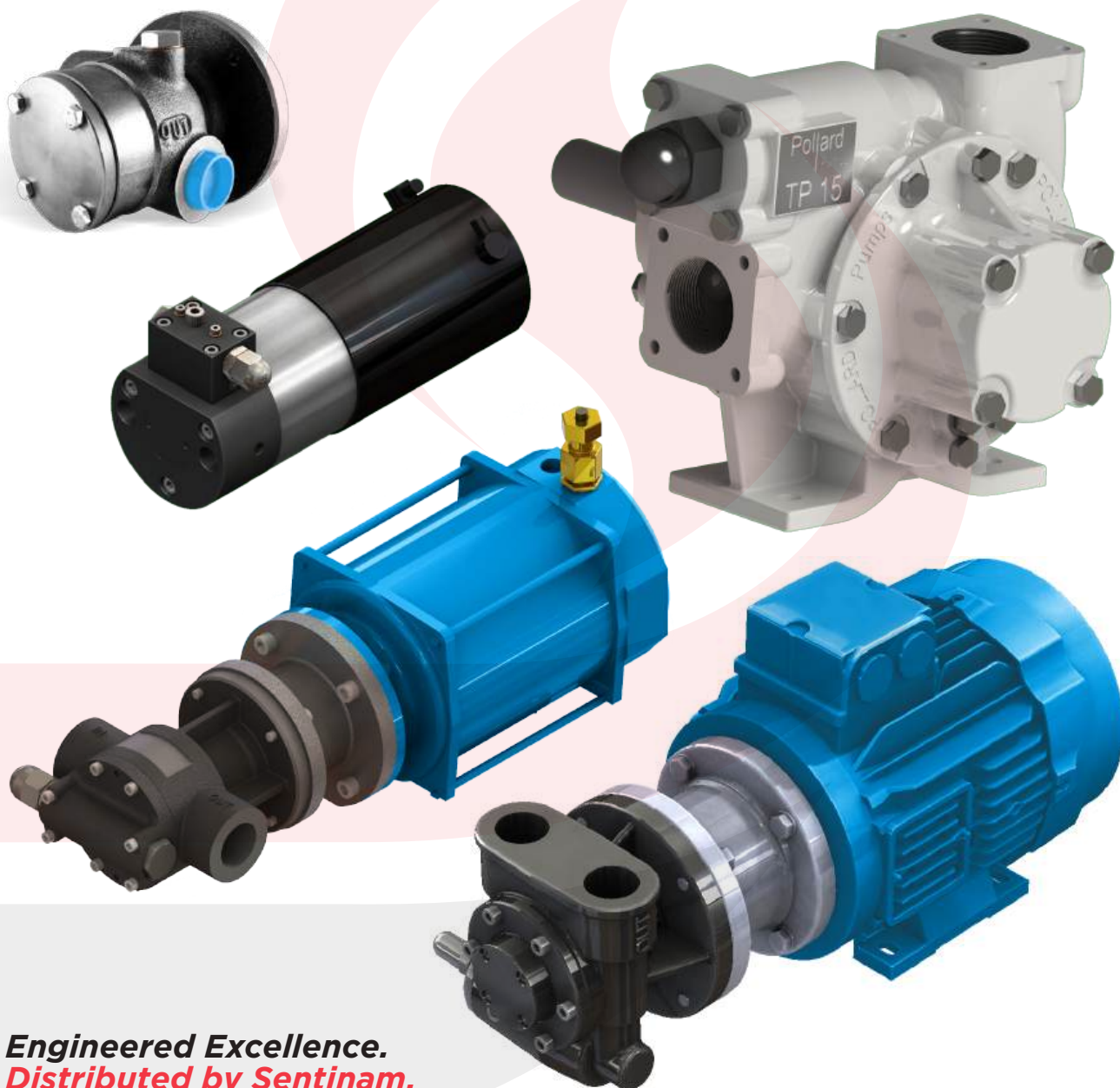


Sentinam: **Your Partner for** **Pollard Pumps**

Custom Positive Displacement Pumps



Engineered Excellence.
Distributed by Sentinam.

Sentinam's Expertise ***with Pollard Pumps***

Sentinam: Delivering Pollard's Proven Reliability Across Diverse Industries.

Leveraging Pollard's CMtec Technology for Optimal Pumping Solutions.

Sentinam is proud to be the UK distributor for Pollard Pumps, bringing you over 70 years of engineering excellence in positive displacement vane pumps. With Pollard's innovative CMtec technology and Sentinam's expert support, we provide tailored pumping solutions for a wide range of demanding applications.

Contents:

- 3** Main Areas of Expertise
- 5** «CMtec» Exclusive Technology
- 6** Referencing Method
- 7** Micro Motor-Pumps
- 9** 1 to 8 cm³/rotation
- 11** 10 to 25 cm³/rotation
- 13** 30 to 67 cm³/rotation
- 15** 1 to 60 cm³/rotation
- Low Viscosity & ATEX
- 17** 70 to 225 cm³/rotation
- 19** 165 to 665 cm³/rotation



Main Areas of Expertise:



Truck Metering Equipment:

Sentinam supply the Pollard sliding vane pump range which are specifically designed for transfer, loading and unloading applications of petroleum products. Highly rated within the industry due to the superb pumping performance and high flow rates, which ensures efficiency and a focus on the reduction of asset management running costs.

Land-Based Systems:

At Sentinam, we specialise in delivering tailored pump solutions for land-based applications. With years of experience in the fluid pumping industry, we work closely with our clients to design, size, and implement the most suitable pump systems that meet unique plant and performance needs.

Railways:

With over 2,500 fuel transfer units in use worldwide, Pollard Pumps, provided by Sentinam, have powered more than 1,500 trains since 2005, as well as many more prior to that. Robustness, reliability, and efficiency are essential qualities. Sentinam supplies Pollard Pumps designed to meet stringent rail standards, ensuring exceptional performance in handling diesel and oil circulation.

Agriculture:

Sentinam offers Pollard Pumps, utilising CMtec technology, for critical agricultural applications like transmission lubrication and gearbox cooling. Their ability to handle varied oil temperatures without cavitation ensures reliable performance even in extreme conditions.

Main Areas of Expertise:



Power Transmission:

Sentinam offers Pollard Pumps, including those with exclusive CMtec technology, to major wind turbine transmission manufacturers. These pumps deliver reliable lubrication for reducers and bearings, contributing to the growing renewable energy sector.

Nuclear:

Since the 1970s, Pollard Pumps, have been trusted in all French nuclear power stations. Their use in lubricating mechanical transmissions and fueling emergency generators highlights their exceptional quality, traceability, and safety.

Defence:

For over 70 years, Pollard Pumps, have served global defence forces. From lubrication of transmissions and gears to fueling helicopters and supporting aircraft maintenance, Pollard Pumps provide reliable pumping solutions for demanding military applications.

Other Industries:

Beyond standard applications, Sentinam and Pollard Pumps collaborate on custom projects for diverse industries, including beekeeping, catering, solar energy, biofuels, and textiles. Our engineering expertise ensures tailored solutions for unique pumping challenges.

«CMtec» Exclusive Technology Delivered by Sentinam

Sentinam brings you Pollard's CMtec technology, a hallmark of reliability and performance. This innovative design, featuring a uniquely shaped stator and monobloc vanes, delivers exceptional volumetric efficiency and versatility.



Three types of CMtec pumps:

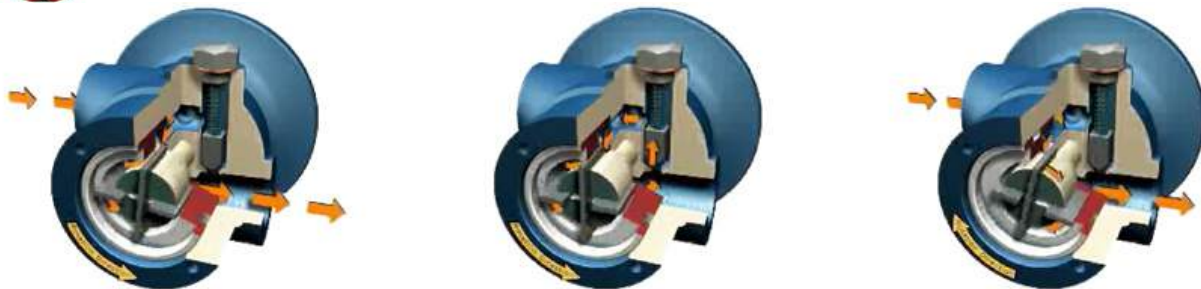
Single-direction: the single rotational direction is set when it is installed in the factory, as the client requires.

Reversible: when the pump's rotational direction is reversed the direction of the pumped fluid is reversed.

Reverse plus system: when the pump's rotational direction is reversed the direction of the pumped fluid is unchanged.

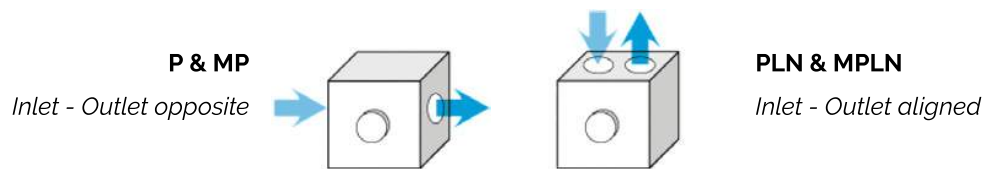
Main advantages of CMtec technology:

- Ability to convey high-viscosity products
- Simple and reliable technology
- Integrated safety bypass
- Silent operation
- Fluid flow independent of shaft rotation
- Simple and rapid maintenance
- Smooth transfer
- Self-priming and high suction power
- High volumetric efficiency



Referencing Method

Sentinam's Product Range



	PR <i>Pump with Reverse Plus System</i>	P <i>Pump without Reverse Plus System</i>	MP <i>Motor-pump</i>	PLN <i>LN version Pump without Reverse Plus System</i>	MPLN <i>LN version Motor-pump without Reverse Plus System</i>
	<i>Capacity in cm³ per rotation</i>				
	<i>Body type</i>				
	L <i>Plain shaft</i>	C <i>Key shaft</i>	T <i>Flat end shaft</i>		
	J <i>Lip seal</i>	G <i>Mechanical seal</i>	S <i>Without seal</i>		
PR	O6	40	C	G	

Sentinam offers a comprehensive range of Pollard Pumps and electric pumps, covering capacities from 0.5 to 665 cm³ per rotation and pressures up to 10 Bar. All models feature the exclusive CMtec technology, making them ideal for fluid transfer, lubrication, filtration, and temperature regulation.

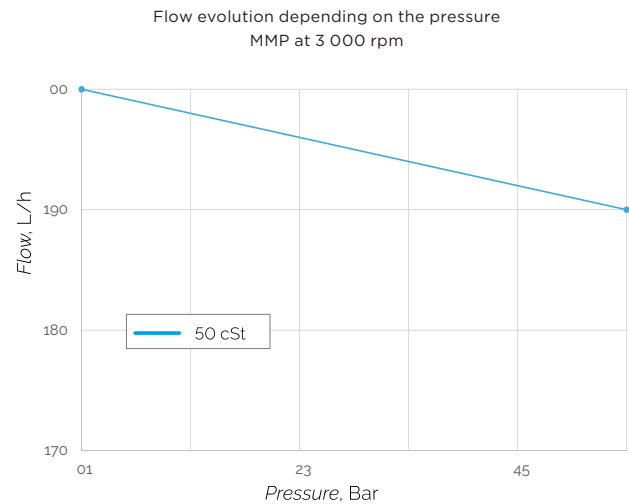
CMtec pumps are available in Standard and «LN» versions.

Performance depends on correct installation. Sentinam's expert team is available for feasibility analysis and support for custom applications.

Micro Motor-Pumps

Sentinam's Compact Solutions

Sentinam provides the Micro range of motor-pumps, ideal for lubricating fluids like oil and diesel. With flow rates from 70 to 200 L/h and pressures up to 5 Bar, these robust pumps deliver reliable performance for continuous operation.

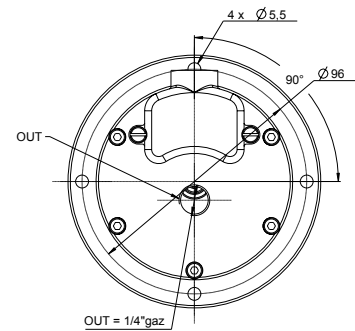
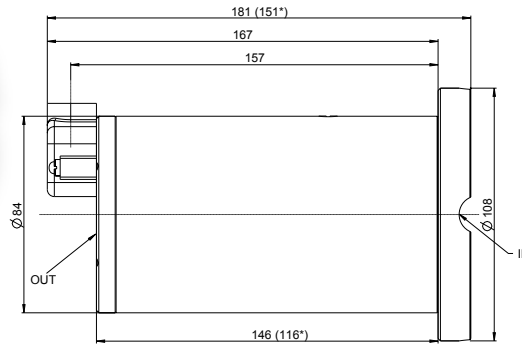


Power absorbed	40W	100W
Flow (L/h)	140 70	200 140 70
Operating pressure (Bar)	1.5 1.5	5 5 5
Suction height (m)	1.5 0.3	1.5 1.5 1.5
Oil viscosity	5 500 cSt	
Standard operating temperature	-20°C → +100 °C	
Body and stator material	Cast iron	
Shaft and vane material	Hardened steel	
Speed rotation (rpm)	3 000	
Suction capacity	-0.2 Bar	
Max. operating pressure	5 Bar	
Max. size of hard particles	200 µm	
Acoustic pressure	65 dB	

Micro Motor-Pumps

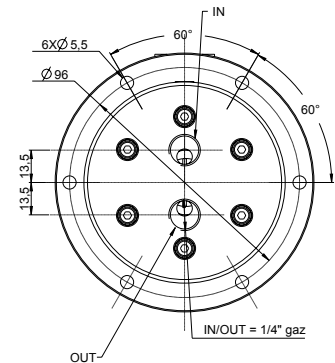
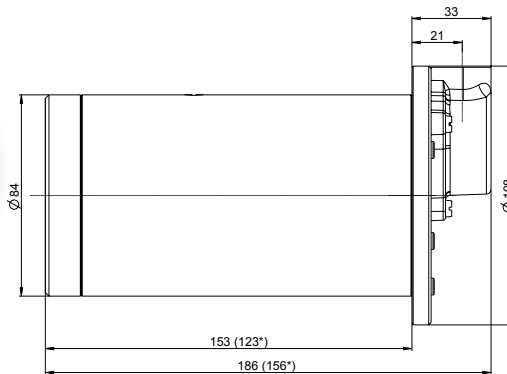
Sentinam's Compact Solutions

MMP TYPE I 40-100 W



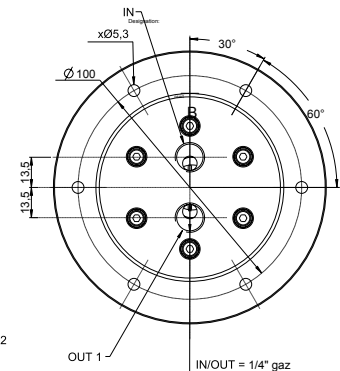
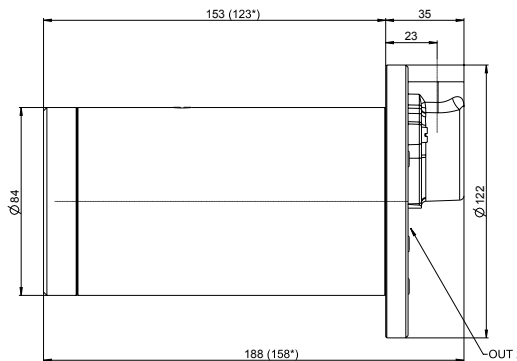
Dimensions between brackets relate to MMP 40 W.
Weight: 4.5kg

MMP TYPE II 40-100 W



Dimensions between brackets relate to MMP 40 W.
Weight: 5kg

MMP TYPE III 40-100 W



In 220-380 V and 220 V mono versions discharge possible from R1 and R2 simultaneously or separately.
Dimensions between brackets relate to MMP 40 W. Weight: 5kg

1 to 8 cm³/rotation

Pollard Pumps, Distributed by Sentinam

Sentinam supplies the 1 to 8 cm³/rotation range of Pollard pumps and motor-pumps, designed for pumping lubricating fluids, including oil and diesel. These pumps offer flow rates from 1 to 24 L/min and operate at working pressures up to 10 Bar.

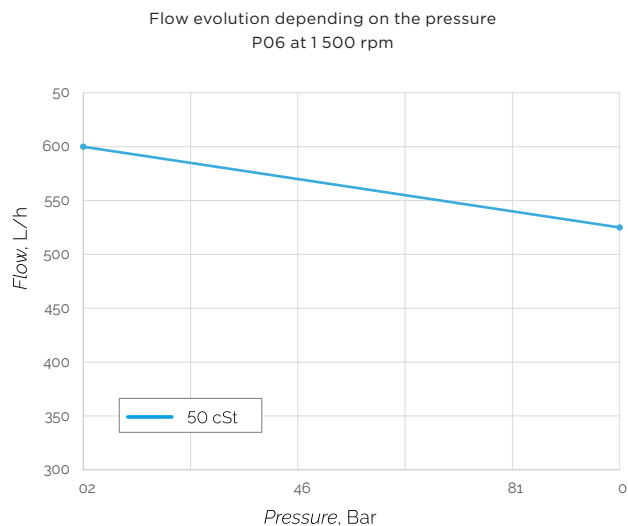
Pollard's "CMtec" technology, available through Sentinam, ensures exceptional volumetric efficiency, superior suction capacity, and the ability to handle viscous fluids. These robust industrial pumps are engineered for continuous, long-term service.

PR Type Pumps:

Equipped with the Reverse Plus system, allowing bidirectional rotation while maintaining consistent fluid flow direction.

MP Type Pumps:

Available in both non-reversible (MPX01 - MPX02 - MPX04 - MPX06 - MPX08) and Reverse Plus (MP01 - MP02 - MP04 - MP06 - MP08) versions.



Flow range	≤ 24 L/min
Speed rotation (rpm)	≤ 3 000*
Fluid viscosity range	1 - 10 000 cSt*
Suction capacity	-0.5 Bar
Max. operating pressure	10 Bar
Integrated bypass	✓
Standard setting of bypass	5 Bar
Standard operating temperature	-20 °C → +150 °C
Body and stator material	Cast iron
Shaft and vane material	Hardened steel
Max. size of hard particles	200 µm
Acoustic pressure	60 dB
Seal type	Mechanical seal

Viscosity, cSt	Maximum speed, rpm
visc. < 500	3 000
500 < visc. < 1 000	1 500
1 000 < visc. < 3 000	1 000
3 000 < visc. < 5 000	750
5 000 < visc. < 10 000	500
visc. > 10 000	200

* Viscosity / speed ratio chart

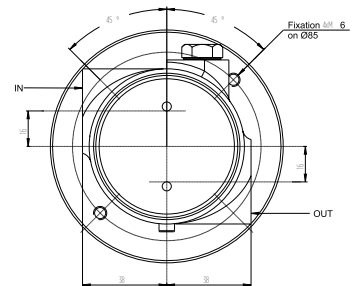
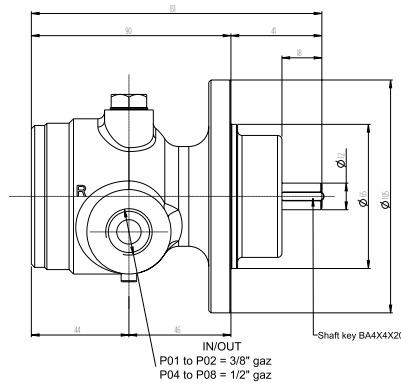
1 to 8 cm³/rotation

Pollard Pumps, Distributed by Sentinam

P01 - P02 - P04 - P06 - P08

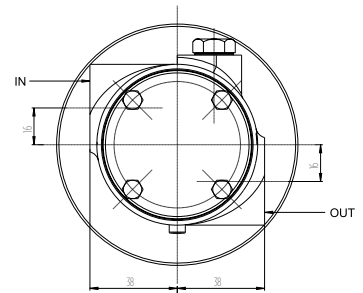
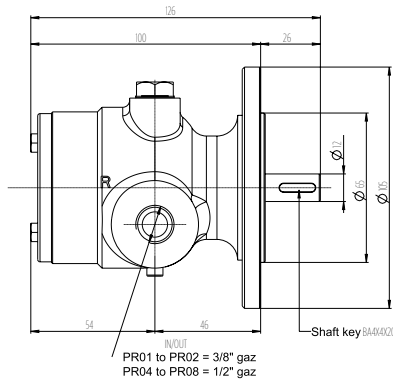


«LN» version



Weight: 2.8kg

PR01 - PR02 - PR04 - PR06 - PR08

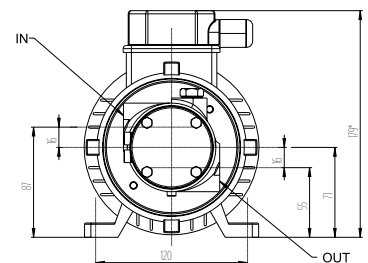
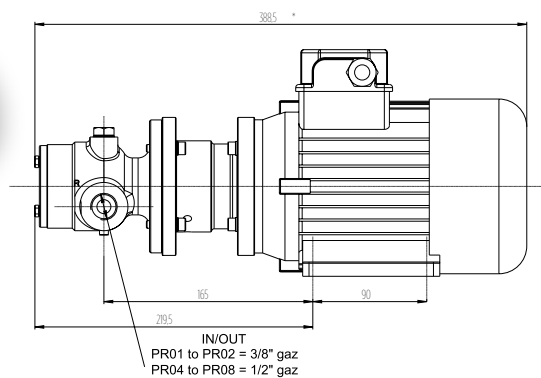


Lip seal version. Weight 2.9kg

MP01 - MP02 - MP04 - MP06 - MP08



«LN» version



In this range of capacities the standard Pollard motor-pumps are equipped with 0.37kW, 4 poles (1 500 rpm), B34, flange FT85 motors. Weight: depending on the motorisation.

10 to 25 cm³/rotation

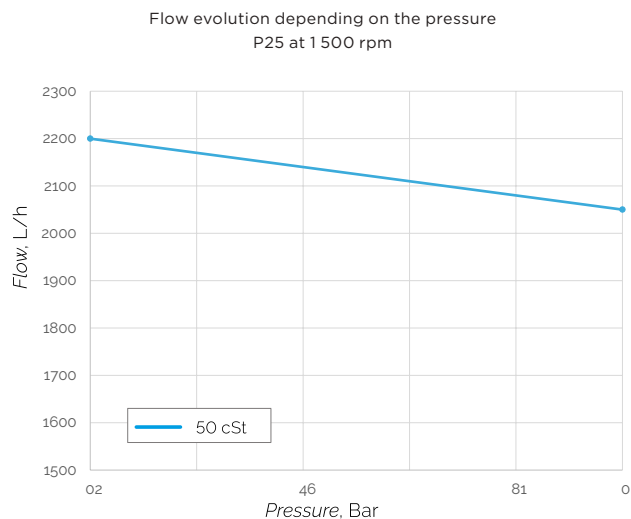
Pollard Pumps, Distributed by Sentinam

Sentinam offers the 10 to 25 cm³/rotation range of Pollard pumps and motor-pumps, suitable for lubricating fluids. These pumps provide flow rates from 1 to 37 L/min for pumps and 7 to 37 L/min for motor-pumps, with a maximum working pressure of 10 Bar.

The “CMtec” technology ensures high volumetric efficiency, excellent suction capacity, and the ability to handle viscous fluids. These robust industrial pumps are built for long-lasting, continuous operation.

PR Type Pumps:

Feature the Reverse Plus system for bidirectional rotation with consistent fluid flow.



Flow range	≤ 37 L/min
Speed rotation (rpm)	≤ 1 500*
Fluid viscosity range	1 - 10 000 cSt*
Suction capacity	-0.5 Bar
Max. operating pressure	10 Bar
Integrated bypass	✓
Standard setting of bypass	5 Bar
Standard operating temperature	-20 °C → +150 °C
Body and stator material	Cast iron
Shaft and vane material	Hardened steel
Max. size of hard particles	200 µm
Acoustic pressure	65 dB
Seal type	Mechanical seal

Viscosity, cSt	Maximum speed, rpm
visc. < 1 000	1 500
1 000 < visc. < 3 000	1 000
3 000 < visc. < 5 000	750
5 000 < visc. < 10 000	500
visc. > 10 000	200

* Viscosity / speed ratio chart

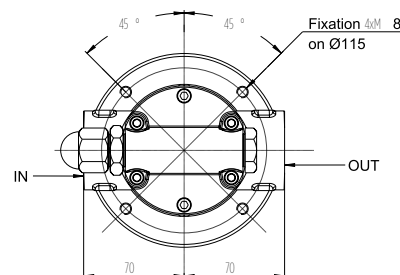
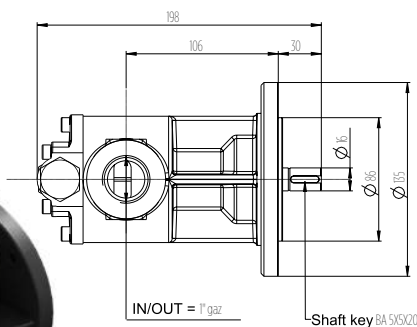
10 to 25 cm³/rotation

Pollard Pumps, Distributed by Sentinam

P10 - P16 - P20 - P25

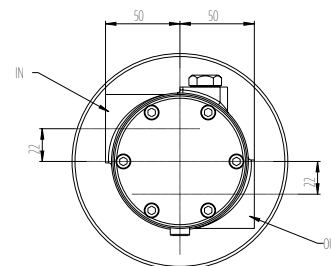
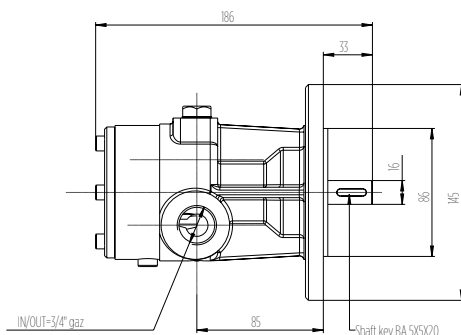


«LN» version



Weight: 6.0kg

PR10 - PR16 - PR20 - PR25

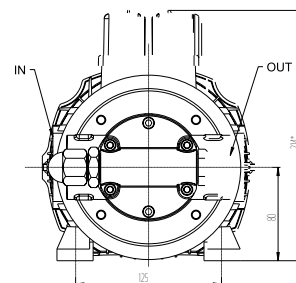
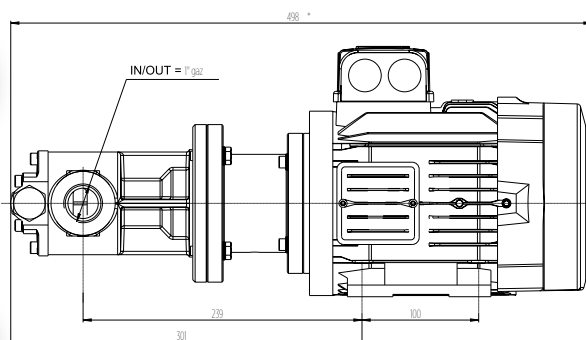


Weight: 6.2kg

MP10 - MP16 - MP20 - MP25



«LN» version



Also available with «Reverse Plus».

In this range of capacities the standard Pollard motor-pumps are equipped with 0.75kW, 4 poles (1 500 rpm), B34, flange FT100 motors. Weight: depending on the motorisation.

30 to 67 cm³/rotation

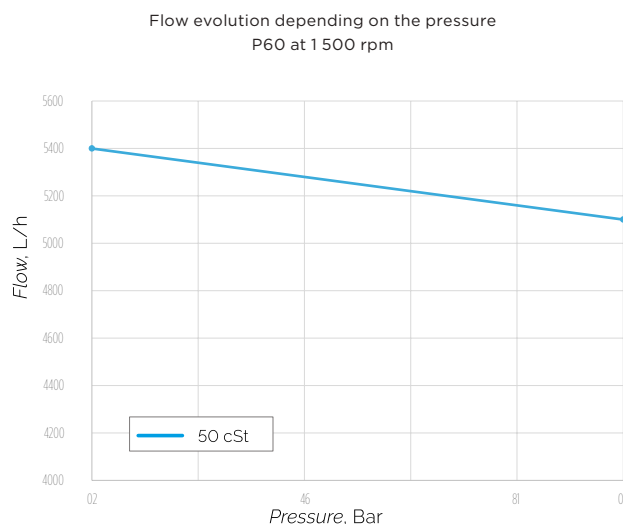
Pollard Pumps, Distributed by Sentinam

Sentinam distributes the 30 to 67 cm³/rotation range of Pollard pumps and motor-pumps, designed for lubricating fluids. These pumps deliver flow rates from 1 to 90 L/min for pumps and 20 to 90 L/min for motor-pumps, with a maximum working pressure of 10 Bar.

The “CMtec” technology ensures high volumetric efficiency, excellent suction capacity, and the ability to handle viscous fluids. These robust industrial pumps are designed for continuous, long-term performance.

PR Type Pumps:

Utilize the Reverse Plus system for bidirectional rotation with consistent fluid flow.



Flow range	≤ 90 L/min
Speed rotation (rpm)	≤ 1 500*
Fluid viscosity range	1 - 10 000 cSt*
Suction capacity	-0.5 Bar
Max. operating pressure	10 Bar
Integrated bypass	✓
Standard setting of bypass	5 Bar
Standard operating temperature	-20 °C → +150 °C
Body and stator material	Cast iron
Shaft and vane material	Hardened steel
Max. size of hard particles	200 µm
Acoustic pressure	70 dB
Seal type	Mechanical seal

Viscosity, cSt	Maximum speed, rpm
visc. < 1 000	1 500
1 000 < visc. < 3 000	1 000
3 000 < visc. < 5 000	750
5 000 < visc. < 10 000	500
visc. > 10 000	200

* Viscosity / speed ratio chart

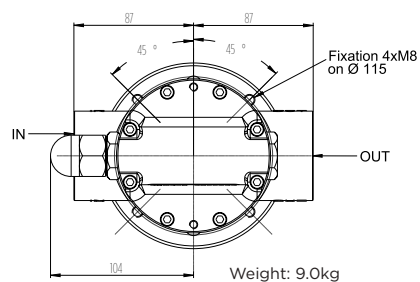
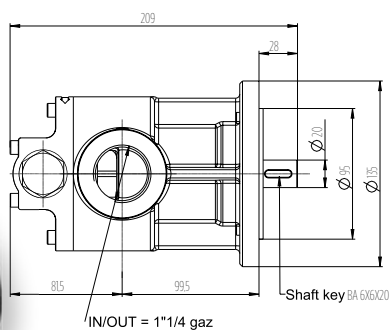
30 to 67 cm³/rotation

Pollard Pumps, Distributed by Sentinam

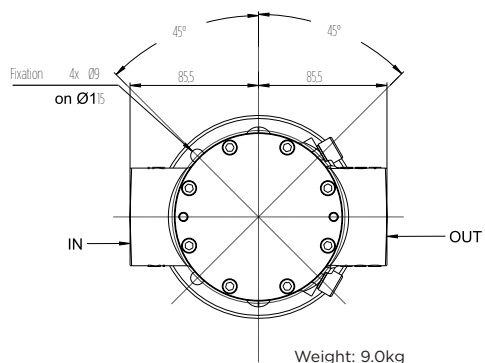
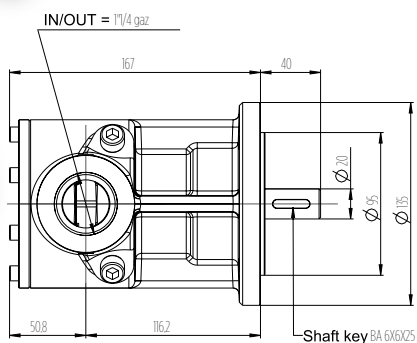
P30 - P40 - P60 - P67



«LN» version



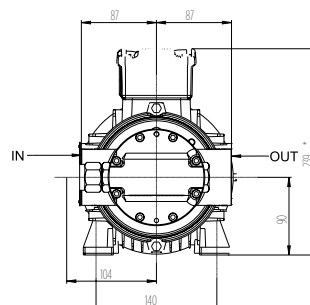
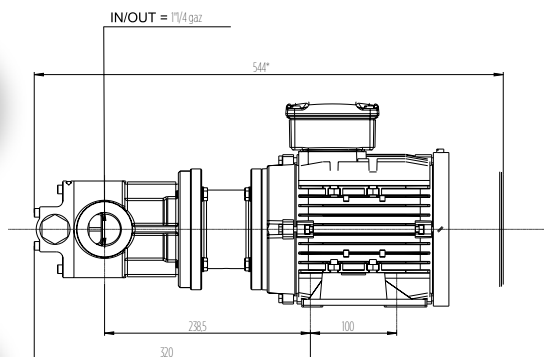
PR30 - PR40 - PR60



MP30 - MP40 - MP60 - MP67



«LN» version



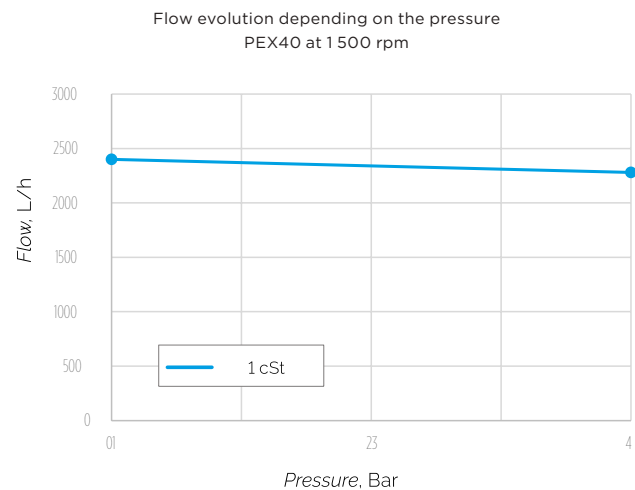
Also available with «Reverse Plus».
Weight: depending on the motorisation.

1 to 60 cm³/rotation - Low Viscosity & ATEX Pollard Pumps, Distributed by Sentinam

Sentinam supplies Pollard pumps compliant with ATEX directive 2014/34/EU and certified by LCIE (Ex II 1 GD by LCIE 07 ATEX 6 011 X). These pumps are designed for optimal performance in explosive atmospheres, with our quality system meeting EN 80079-34 standards.

Our ATEX-certified products offer flow rates from 1 to 60 L/min (at 1500 rpm).

The “CMtec” technology ensures high volumetric efficiency, excellent suction capacity, and the ability to handle viscous fluids. These robust industrial pumps are built for continuous, long-term operation.



Flow range	1 - 60 L/min
Speed rotation (rpm)	≤ 1 500*
Fluid viscosity range	< 10 cSt*
Max. operating pressure	8 Bar
Integrated bypass	✓
Standard setting of bypass	3 Bar
Standard operating temperature	-20 °C → +90 °C
Body and stator material	Cast iron
Shaft material	Hardened steel
Blade material	Composite
Bearing material	Carbon
Max. size of hard particles	125 µm
Acoustic pressure	80 dB
Seal type	Mechanical seal

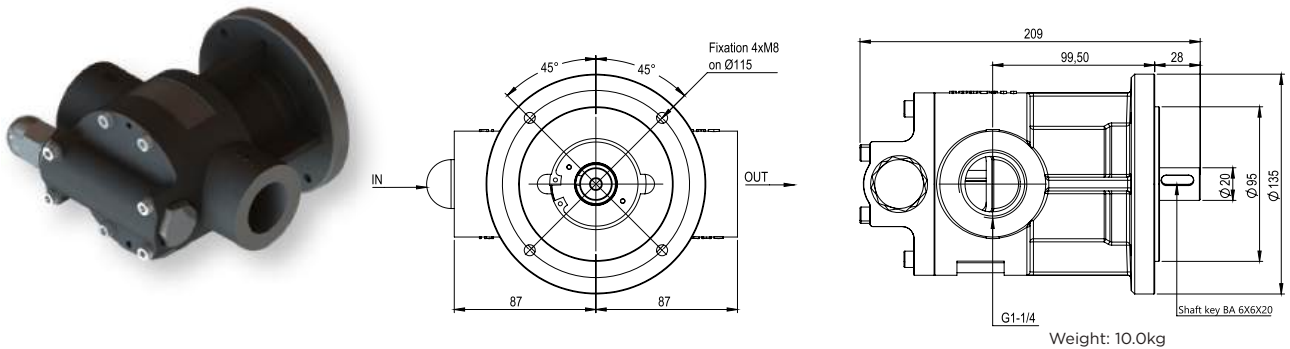
Viscosity, cSt	Maximum speed, rpm
visc. < 1 000	1 500
1 000 < visc. < 3 000	1 000
3 000 < visc. < 5 000	750
5 000 < visc. < 10 000	500
visc. > 10 000	200

* Viscosity / speed ratio chart

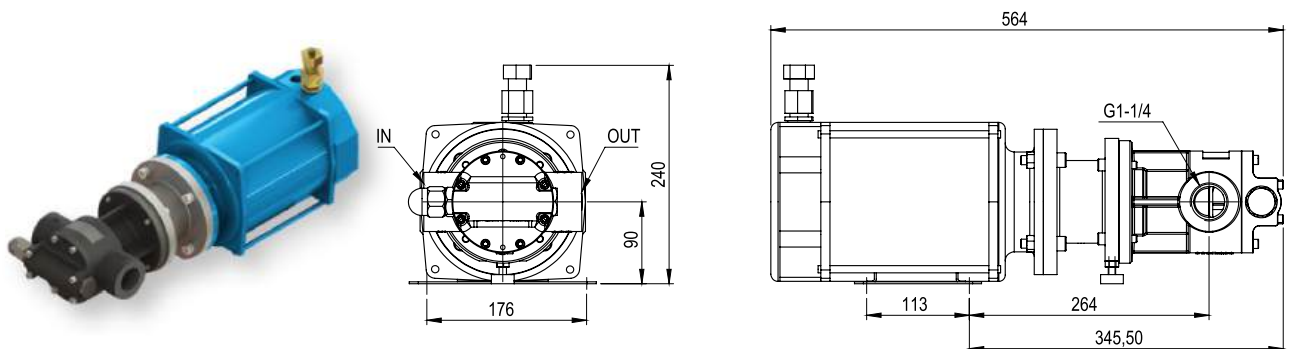
1 to 60 cm³/rotation - Low Viscosity & ATEX

Pollard Pumps, Distributed by Sentinam

PEX 1-60 LV



MPEX 1-60 LV



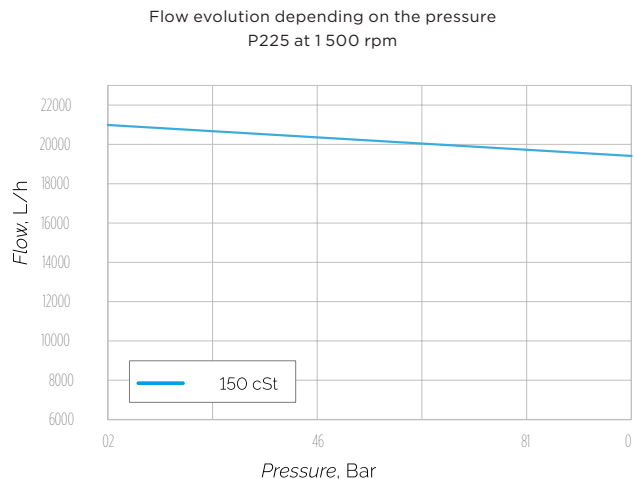
In this range of capacities the standard Pollard MPEX40 LV CD motor-pump is equipped with 0.75kW, 4 poles (1 500 rpm), B34, flange FT100 motors.
Weight: depending on the motorisation.

70 to 225 cm³/rotation

Pollard Pumps, Distributed by Sentinam

Sentinam provides the 70 to 225 cm³/rotation range of Pollard pumps and motor-pumps, designed for lubricating fluids. These pumps offer flow rates from 100 to 330 L/min, with a working pressure up to 10 Bar.

The “CMtec” technology ensures high volumetric efficiency, excellent suction capacity, and the ability to handle viscous fluids. These robust industrial pumps are engineered for continuous, long-term performance.



Flow range	100 - 330 L/min
Speed rotation (rpm)	200 - 1 500*
Fluid viscosity range	1 - 10 000 cSt*
Suction capacity	-0.5 Bar
Max. operating pressure	10 Bar
Integrated bypass	✓
Standard setting of bypass	5 Bar
Standard operating temperature	-20 °C → +150 °C
Body and stator material	Cast iron
Shaft material	Hardened steel
Blade material	Hardened steel (option: composite)
Bearing material	Steel (option: carbon)
Max. size of hard particles	200 µm
Acoustic pressure	80 dB
Seal type	Mechanical seal
Flanges	DN50 ISO PN16 (Option: SAE)

Viscosity, cSt

Maximum speed, rpm

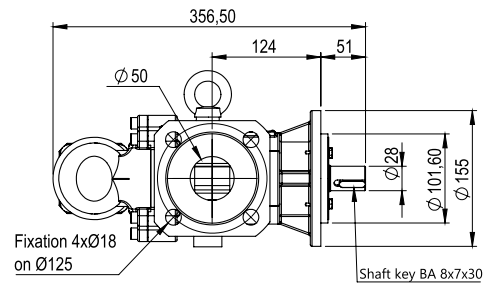
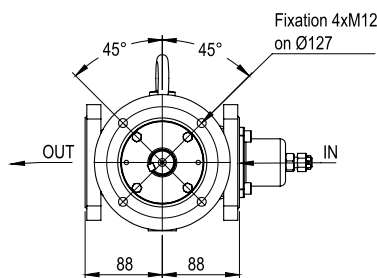
visc. < 1 000	1 500
1 000 < visc. < 3 000	1 000
3 000 < visc. < 5 000	750
5 000 < visc. < 10 000	500
visc. > 10 000	200

* Viscosity / speed ratio chart

70 to 225 cm³/rotation

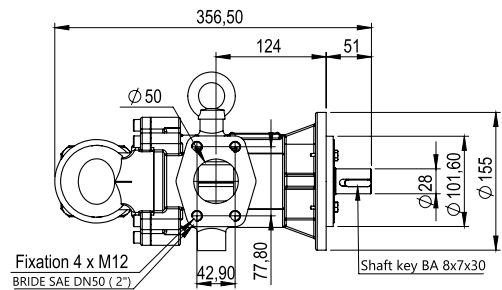
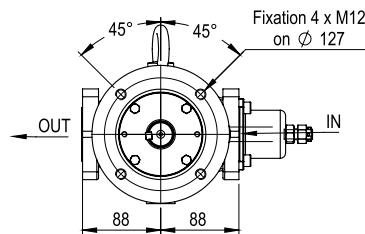
Pollard Pumps, Distributed by Sentinam

P 70-225



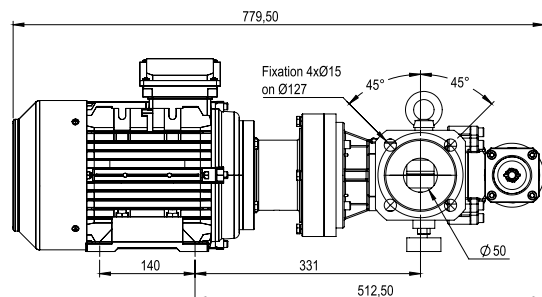
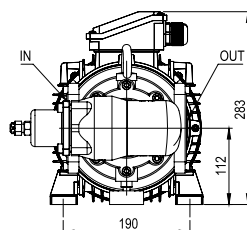
Weight: 22.0kg

P 70-225 (SAE)



Weight: 20.0kg

MP 70-225



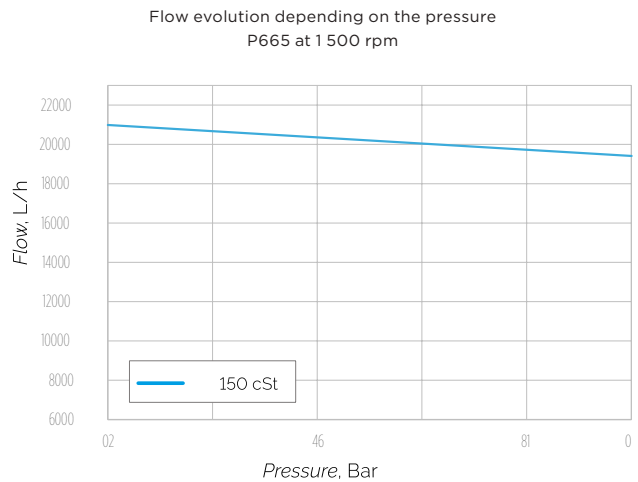
Weight: depending on the motorisation.

165 to 665 cm³/rotation

Pollard Pumps, Distributed by Sentinam

Sentinam supplies the 165 to 665 cm³/rotation range of Pollard pumps and motor-pumps, designed for lubricating fluids. These pumps provide flow rates from 250 to 1,000 L/min, with a working pressure up to 10 Bar.

The “CMtec” technology ensures high volumetric efficiency, excellent suction capacity, and the ability to handle viscous fluids. These robust industrial pumps are built for continuous, long-term operation.



Flow range	250 - 1 000 L/min
Speed rotation (rpm)	200 - 1 500*
Fluid viscosity range	1 - 10 000 cSt*
Suction capacity	-0.5 Bar
Max. operating pressure	10 Bar
Integrated bypass	✓
Standard setting of bypass	5 Bar
Standard operating temperature	-20 °C → +150 °C
Body and stator material	Cast iron
Shaft material	Hardened steel
Blade material	Hardened steel
Bearing material	Steel
Max. size of hard particles	200 µm
Acoustic pressure	80 dB
Seal type	Mechanical seal
Flanges	DN80 ISO PN16 (Option: SAE DN80)

Viscosity, cSt

Maximum speed, rpm

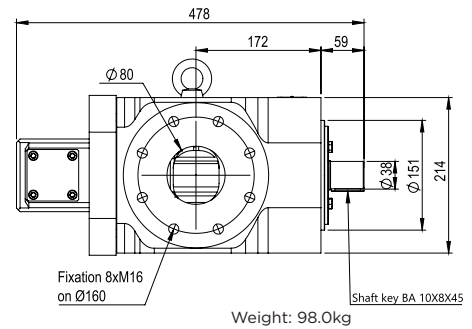
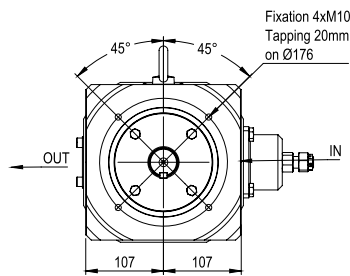
visc. < 1 000	1 500
1 000 < visc. < 3 000	1 000
3 000 < visc. < 5 000	750
5 000 < visc. < 10 000	500
visc. > 10 000	200

* Viscosity / speed ratio chart

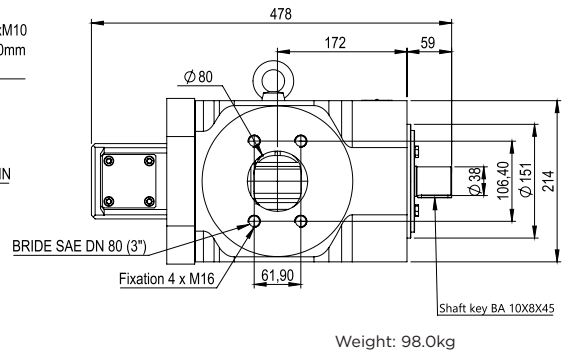
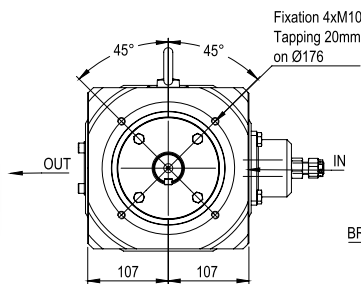
165 to 665 cm³/rotation

Pollard Pumps, Distributed by Sentinam

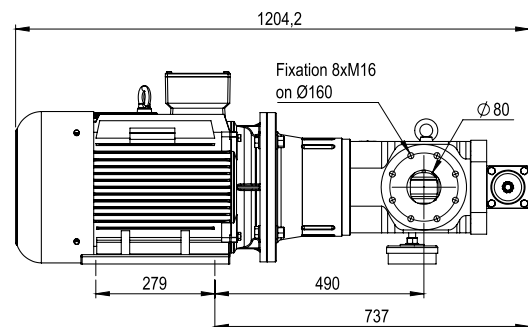
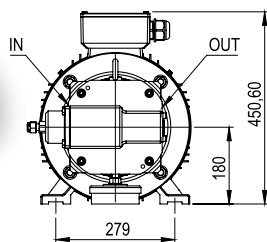
P 165 - 665



P 165 - 665 (SAE)



MP 165 - 665



Pollard Pumps ***Delivered by Sentinam***

Since 1946, Pollard has been a leader in the design and manufacture of high-quality positive displacement vane pumps, produced in their state-of-the-art, automated factory in France. Sentinam is proud to be your trusted UK distributor, bringing you these exceptional pumping solutions.

Whether you require a single, specialised pump or a large production run, Sentinam, in partnership with Pollard Pumps, is committed to providing optimal pumping solutions tailored to your specific needs. We leverage Pollard's decades of experience and advanced manufacturing to deliver customised services for our clients across lubrication, transfer, transmission, and cooling applications.

T: 07385 473588

E: sales@sentinam.co.uk

W: www.sentinam.co.uk

15 Lower Wortley Road, Leeds, West Yorkshire, LS12 4RY